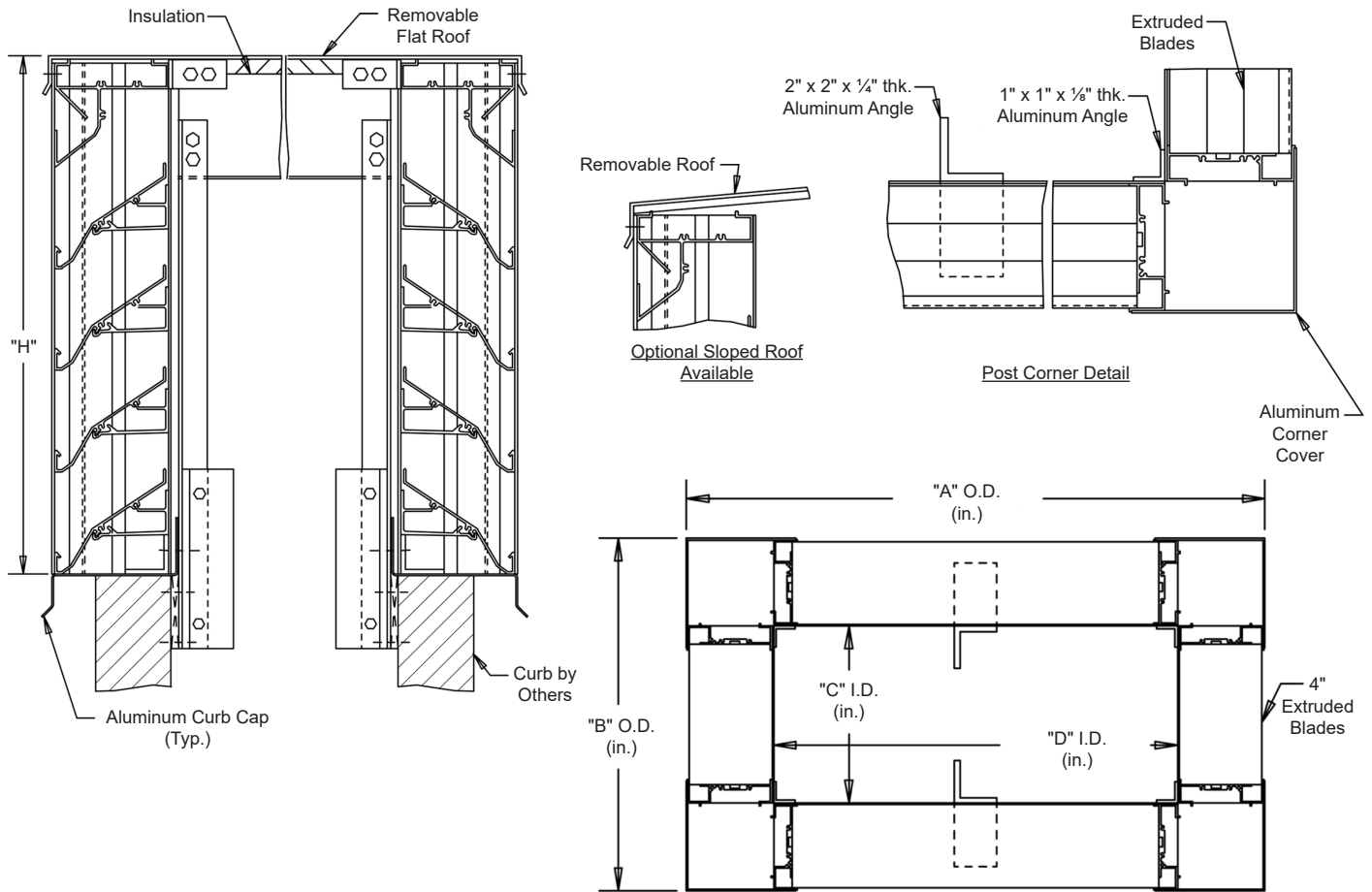


Interior Fastening Installation

ANGLES - All corners and intermediate to extend from roof into curb.



Continuous angle at the four corners and intermediate as required.

STANDARD MATERIALS AND CONSTRUCTION


MATERIAL: .081" thick (nominal) or .125" thick (nominal) extruded aluminum, 6063-T52/T6 alloy, with reinforcing rib bosses.

ROOF: .060" thick (nominal) sheet aluminum removable roof, reinforced with aluminum bracing where required to take a snow load of 40 lbs./sq.ft., plus a required safety factor.

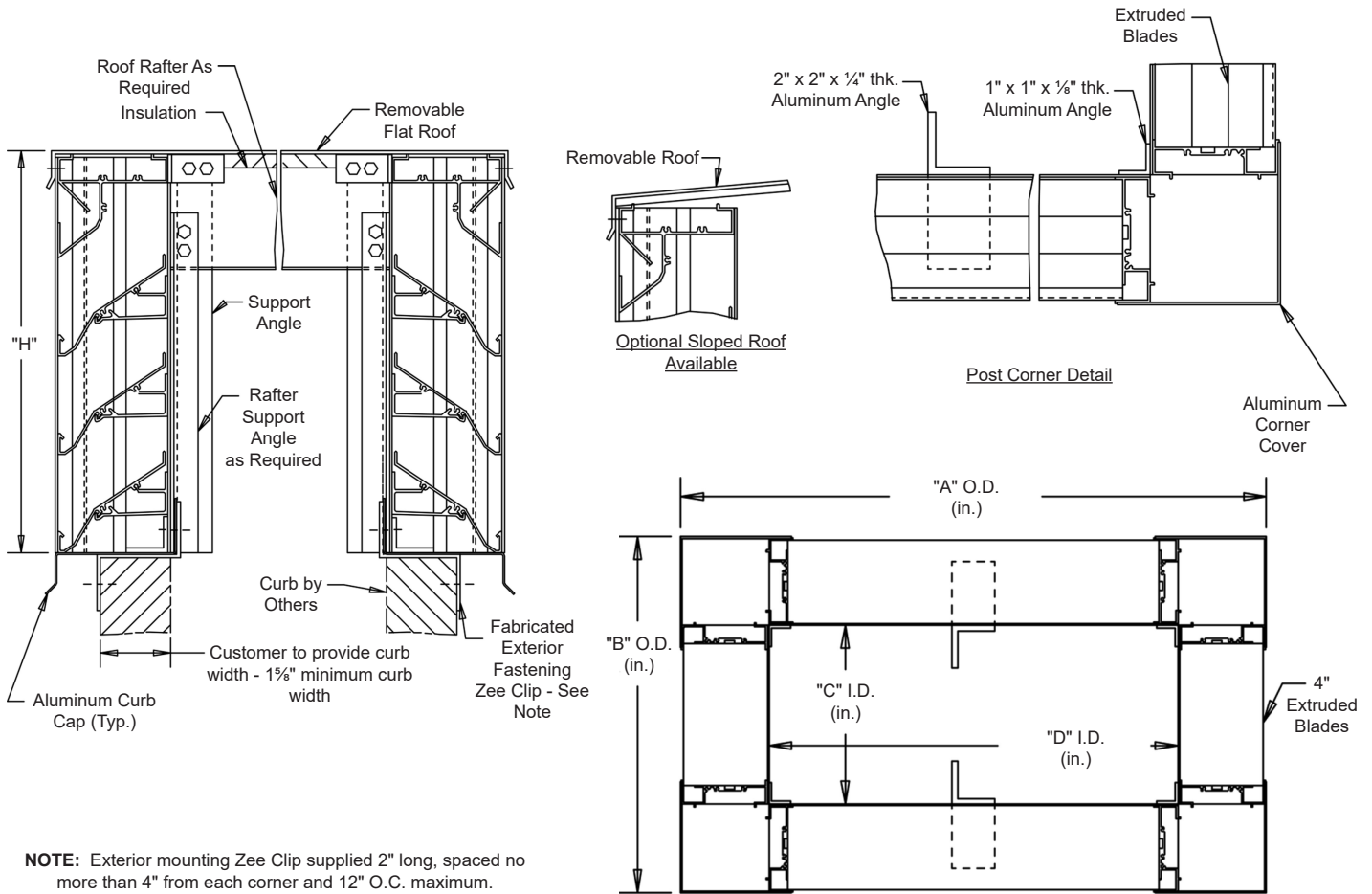
SCREENS: (When indicated)
Bird Screen - 1/2" square mesh, 19 GA. galvanized steel, on interior.

INSULATION: Underside of roof is lined with 1/2" thick insulation.

NOTES: Penthouse dimensions "A" or "B" exceeding 84" shall be shipped in sections for field assembly by others.

											
Item #	Qty	A	B	C	D	H	Mullion	Type	Location		
Penthouse Dimensions								Screens		Union Made	
Arch. / Eng. :						EDR:		ECN:		Job:	
Contractor:											
Project:						Date:		DWN:		DWG:	

Exterior Fastening Installation



NOTE: Exterior mounting Zee Clip supplied 2" long, spaced no more than 4" from each corner and 12" O.C. maximum.

Continuous angle at the four corners and intermediate as required.

STANDARD MATERIALS AND CONSTRUCTION


MATERIAL: .081" thick (nominal) or .125" thick (nominal) extruded aluminum, 6063-T52/T6 alloy, with reinforcing rib bosses.

ROOF: .060" thick (nominal) sheet aluminum removable roof, reinforced with aluminum bracing where required to take a snow load of 40 lbs./sq.ft., plus a required safety factor.

SCREENS: (When indicated)
Bird Screen - 1/2" square mesh, 19 GA. galvanized steel, on interior.

INSULATION: Underside of roof is lined with 1/2" thick insulation.

NOTES: Penthouse dimensions "A" or "B" exceeding 84" shall be shipped in sections for field assembly by others.

Item #	Qty	A	B	C	D	H	Mullion	Type	Location				
		Penthouse Dimensions							Screens				
Arch. / Eng. :						EDR:		ECN:		Job:			
Contractor:													
Project:						Date:		DWN:		DWG:			